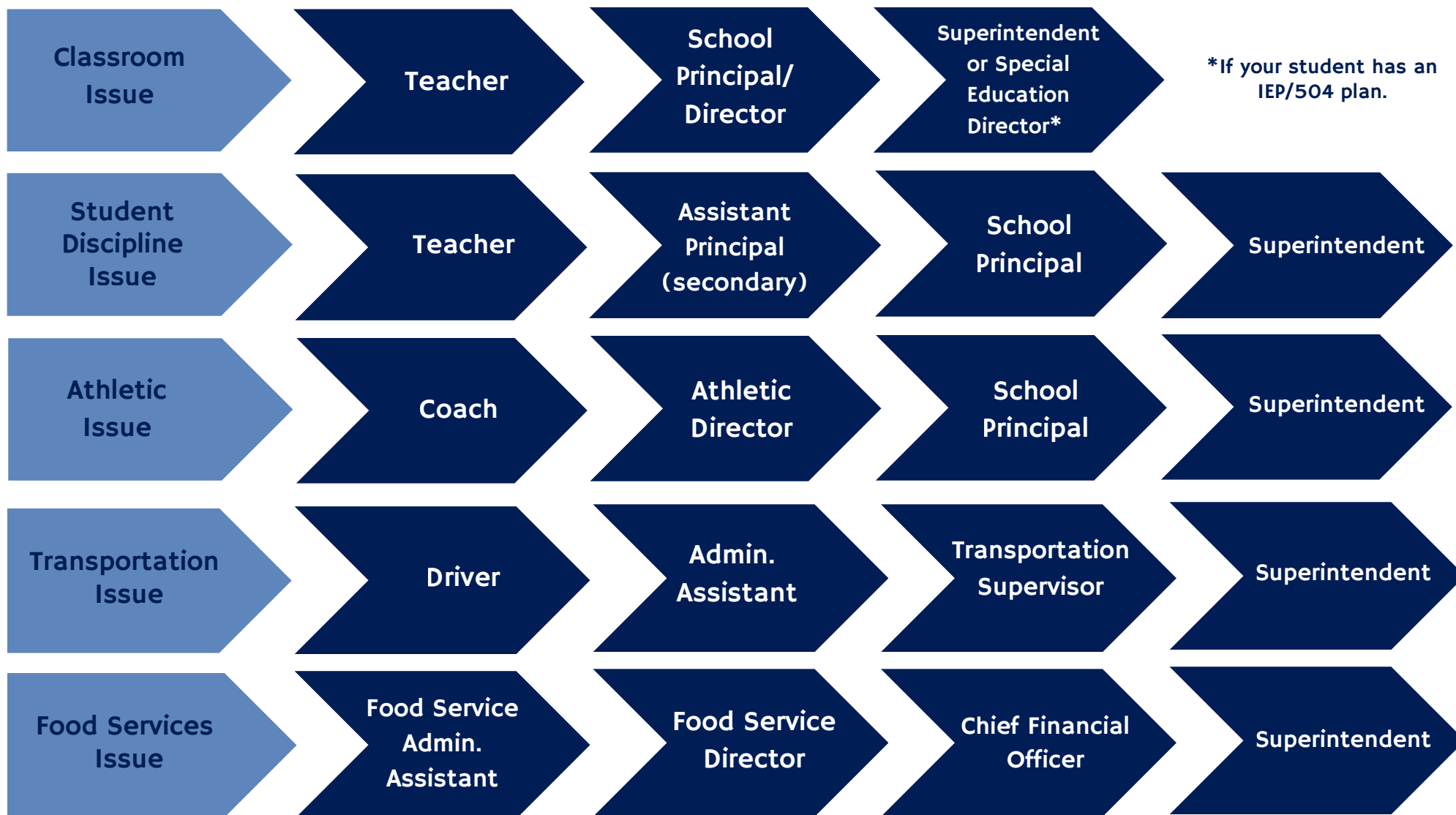




## COMMUNICATION FLOW CHART

The flow of communication and contact information below should be followed by families and will be adhered to by staff and administrators when addressing school issues. This chart does not represent an appeals process.

*We promote and foster student advocacy. Please encourage students to use their voices and advocate for their needs and/or concerns through communication channels.*



\*If your student has an IEP/504 plan.